

**ECS WORKSHOP ON AGGRESSION**  
**31<sup>ST</sup> OCTOBER – 01<sup>ST</sup> NOVEMBER 2016**  
**NIJMEGEN, THE NETHERLANDS**



## **WELCOME**

**\*\*\***

**Welcome to the first early career scientists workshop on aggression! We hope you are as excited about the workshop as we are.**

**The next two days will be filled with interesting lectures and debates on state-of the art research of aggression. Further, there will be lots of room to get to know your fellow workshop attendees as well as the consortia they are working in. We would really like to encourage all of you to engage in fruitful discussions with your fellow attendees as well as our world-class speakers. This really is a great chance to increase your knowledge and also build connections that may help you along your career path.**

**We really hope the next few days will be exciting, informative, inspiring and fun!**

**If you have any questions or concerns, please do not hesitate to speak to a member of the organizing team. We will be happy to help if we can!**

**Warm regards,**

**The organizing team**

**Mireille Bakker**

**Sarah Baumeister**

**Noe Fernandez-Castillo**

**Anne Hendriks**

**Nathalie Holz**

**Jenny van Dongen**

**Marjolein van Donkelaar**

## AGENDA

\*\*\*

### MONDAY, 31<sup>ST</sup> OCTOBER 2016

	<b>Arrival and check-in</b> of Early Career Scientists	
09:00h	<b>Registration and Welcome Coffee for ECS</b> (30 min)	
09:30h	<b>Welcome and Introduction</b> (60 min) Noelia Fernández, Anne Hendriks, Jenny van Dongen, Jack Rogers and Sarah Baumeister	
10:30h	<b>Lecture and discussion on Phenotypes/Subtypes of Aggression</b> (120 min) Jan Buitelaar and Robert Vermeiren	
12:30h	<b>LUNCH and Poster session</b> (150 min)	
15:00h	<b>Lecture on Genetics and Biomarkers – the basics</b> (60 min) Michel Nivard	<b>Lecture on MRI – the basics</b> (60 min) Stephane de Brito
16:00h	<b>Genetics - state-of-the-art in aggression research</b> (30 min) Barbara Franke	
16:30h	<b>MRI - state-of-the-art in aggression research</b> (30 min) Stephane de Brito	
17:00h	<b>Social activity and Dinner</b>	

### TUESDAY, 1<sup>ST</sup> NOVEMBER 2016

09:00h	<b>Treatment of Aggression</b> Susan Young (60 min)
10:00h	<b>Animal models of Aggression</b> Jeffrey Glennon (60 min)
11:00h	<b>COFFEE</b> (30 min)
11:30h	<b>Brainstorming: Collaboration between the Consortia and Dissemination</b> combined with a sandwich lunch (120 min)
13:30h	<b>Invited Lecture: Role of Environment in aggression</b> Richard Tremblay (60 min)
14:30h	<b>Epigenetics, a possible biological mediator of environmental influences on (aggressive) behaviour</b> Jenny van Dongen (45 min)
15:15h	<b>Closing Discussion: what did we learn and how do we consolidate collaborative efforts</b> by Early Career Scientists, with consortium leaders present (60 min)
16:15h	<b>End of the Autumn School</b> all

**MEET YOUR SPEAKER**  
**(IN ORDER OF APPEARANCE)**

\*\*\*

**Jan Buitelaar**

Radboud University Nijmegen

**Plenary Lecture on Phenotypes/Subtypes of aggression, followed by a debate**

Monday, 31<sup>st</sup> October 2016, 10:30h

**Research interest:** Neuropsychiatric and developmental disorders

**Main publications:**

- van der Meer D, Hoekstra PJ, Zwiers M, Mennes M, Schweren LJ, Franke B, Heslenfeld DJ, Oosterlaan J, Faraone SV, Buitelaar JK, Hartman CA. Brain Correlates of the Interaction Between 5-HTTLPR and Psychosocial Stress Mediating Attention Deficit Hyperactivity Disorder Severity. *Am J Psychiatry* 2015, 172(8):768-75.
- von Rhein D, Cools R, Zwiers MP, van der Schaaf M, Franke B, Luman M, Oosterlaan J, Heslenfeld DJ, Hoekstra PJ, Hartman CA, Faraone SV, van Rooij D, van Dongen EV, Lojowska M, Mennes M, Buitelaar J. Increased neural responses to reward in adolescents and young adults with attention-deficit/hyperactivity disorder and their unaffected siblings. *J Am Acad Child Adolesc Psychiatry* 2015, 54(5):394-402.
- Greven CU, Bralten J, Mennes M, O'Dwyer L, van Hulzen KJ, Rommelse N, Schweren LJ, Hoekstra PJ, Hartman CA, Heslenfeld D, Oosterlaan J, Faraone SV, Franke B, Zwiers MP, Arias-Vasquez A, Buitelaar JK. Developmentally stable whole-brain volume reductions and developmentally sensitive caudate and putamen volume alterations in those with attention-deficit/hyperactivity disorder and their unaffected siblings. *JAMA Psychiatry* 2015, 72(5):490-9.
- Brugman S, Cornet LJ, Smeijers D, Smeets K, Oostermeijer S, Buitelaar JK, Verkes RJ, Lobbestael J, de Kogel CH, Jansen LM. Examining the reactive proactive questionnaire in adults in forensic and non-forensic settings: A variable- and person-based approach. *Aggress Behav.* 2016 Sep 7. doi: 10.1002/ab.21671. [Epub ahead of print] PubMed PMID: 27605443.
- Smeets KC, Oostermeijer S, Lappenschaar M, Cohn M, van der Meer JM, Popma A, Jansen LM, Rommelse NN, Scheepers FE, Buitelaar JK. Are Proactive and Reactive Aggression Meaningful Distinctions in Adolescents? A Variable- and Person-Based Approach. *J Abnorm Child Psychol.* 2016 Apr 26. [Epub ahead of print] PubMed PMID: 27113216.

**Main grants and awards:**

2011 – Research award of Dutch Society for Psychiatry 2014 - EU FP7 project “Multidisciplinary Approaches to Translational Research in Conduct Syndromes (MATRICS)” (co-applicant). Goal: examine the neural correlates of instrumental aggression/psychopathy.

2015 - Horizon2020 Marie Skłodowska-Curie ETN grant “Mastering skills in the training Network for attention deficit hyperactivity and autism spectrum Disorders (MiND)” (Co-applicant).

2015 - Horizon2020 Marie Skłodowska-Curie ETN grant “Integrated view on disruptions of early brain development (BRAINVIEW)” (PI/coordinator).

**Content of the lecture:** The distinction between reactive and proactive aggression.

**Plenary Lecture on Phenotypes/Subtypes of aggression, followed by a debate**

Monday, 31<sup>st</sup> October 2016, 10:30h

**Research interest:** (forensic) child and youth psychiatry

**Main publications:**

- Vermeiren, R. (2003). Psychopathology and delinquency in adolescents: a descriptive and developmental perspective. *Clinical Psychology Review*, 23(2), 277-318.
- Colins, O. F., & Vermeiren, R. R. (2013). The usefulness of DSM-IV and DSM-5 conduct disorder subtyping in detained adolescents. *the Journal of Nervous and Mental Disease*, 201(9), 736-743.
- de Haan, A. M., Boon, A. E., de Jong, J. T., Hoeve, M., & Vermeiren, R. R. (2013). A meta-analytic review on treatment dropout in child and adolescent outpatient mental health care. *Clinical Psychology Review*, 33(5), 698-711.
- Vahl, P., Colins, O. F., Lodewijks, H. P., Lindauer, R., Markus, M. T., Doreleijers, T. A., & Vermeiren, R. R. (2016). Psychopathic traits and maltreatment: relations with aggression and mental health problems in detained boys. *International Journal of Law and Psychiatry*, 46, 129-136.
- Aghajani, M., Veer, I. M., van Hoof, M. J., Rombouts, S. A., van der Wee, N. J., & Vermeiren, R. R. (2016). Abnormal functional architecture of amygdala-centered networks in adolescent posttraumatic stress disorder. *Human Brain Mapping*, 37(3), 1120-1135.

**Lecture on Genetics and biomarkers –basics**

Monday, 31<sup>st</sup> October 2016, 15:00h

**Research interest:** Statistical and behavioral genetics, biological psychology, psychometrics

**Main publications:**

- Nieuwboer, H. A., Pool, R., Dolan, C. V., Boomsma, D. I., & Nivard, M. G. (2016). GWIS: Genome-Wide Inferred Statistics for Functions of Multiple Phenotypes. *The American Journal of Human Genetics*.
- Nivard, M. G., Middeldorp, C. M., Lubke, G., Hottenga, J. J., Abdellaoui, A., Boomsma, D. I., & Dolan, C. V. (2016). Detection of gene–environment interaction in pedigree data using genome-wide genotypes. *European Journal of Human Genetics*.
- Nivard, M. G., Dolan, C. V., Kendler, K. S., Kan, K. J., Willemsen, G., van Beijsterveldt, C. E. M., ... & Middeldorp, C. M. (2015). Stability in symptoms of anxiety and depression as a function of genotype and environment: a longitudinal twin study from ages 3 to 63 years. *Psychological Medicine*, 45(05), 1039-1049.

**Content of the lecture:** Everything you are afraid to ask your supervisor about genetics.

**Lecture on MRI-basics**

Monday, 31<sup>st</sup> October 2016, 15:00h

**MRI, state-of-the-art in aggression research**

Monday, 31<sup>st</sup> October 2016, 16:30h

**Research interest:** Behavioural, neurocognitive and structural/functional magnetic resonance brain imaging techniques to better understand the characteristics of different subgroups of children and adults displaying severe antisocial behaviour and psychopathic traits

**Main publications:**

- Rogers, J. C., & De Brito, S. A. (2016). Cortical and subcortical gray matter volume in youths with conduct problems: A meta-analysis. *JAMA Psychiatry*, 73(1), 64-72. doi:10.1001/jamapsychiatry.2015.2423.
- Sebastian, C. L.\*, De Brito, S. A.\*, McCrory, E. J., Hyde, Z. H., Lockwood, P. L., Cecil, C. A. M., & Viding, E. (2016). Grey matter volumes in children with conduct problems and varying levels of callous-unemotional traits. *Journal of Abnormal Child Psychology*, 44(4), 639-649. doi:10.1007/s10802-015-0073-0 \* Equal contribution
- Baker, R. H., Clanton, R. L., Rogers, J. C., & De Brito, S. A. (2015). Neuroimaging findings in disruptive behavior disorders. *CNS Spectrums*. doi: 10.1017/S1092852914000789

**Treatment of Aggression**

Tuesday, 1<sup>st</sup> November 2016, 09:00h

**Research interest:** Forensic clinical psychology

**Main publications:**

- Young S, Taylor E, Gudjonsson G, 2016, Childhood Predictors of Criminal Offending: Results From a 19-Year Longitudinal Epidemiological Study of Boys, *Journal of Attention Disorders*, 20, 206-213
- Gonzalez RA, Gudjonsson GH, Wells J, Young S, 2016, The Role of Emotional Distress and ADHD on Institutional Behavioral Disturbance and Recidivism Among Offenders, *Journal of Attention Disorders*, Vol:20, Pages:368-378
- Young S, González RA, Mutch L, Mallet-Lambert I, O'Rourke L, Hickey N, Asherson P, Gudjonsson GH, 2016, Diagnostic accuracy of a brief screening tool for attention deficit hyperactivity disorder in UK prison inmates, *Psychological Medicine*, Vol:46, Pages:1449-1458
- Young S, Adamou M, Asherson P, Coghill D, Colley B, Gudjonsson G, Hollis C, McCarthy J, Muller U, Moli P, Pitts M, Arif M, 2016, Recommendations for the transition of patients with ADHD from child to adult healthcare services: a consensus statement from the UK adult ADHD network, *Bmc Psychiatry*, Vol:16

**Genetics, state-of-the-art in aggression research**Monday, 31<sup>st</sup> October 2016, 16:00h

**Research interest:** Unraveling the genetics of multifactorial diseases. Identification of genetic risk factors for psychiatric disorders, especially ADHD, major depression, dyslexia, and the autism spectrum.

**Examples of recent publications:**

- Demontis D, Lescai F, Børglum A, Glerup S, Østergaard SD, Mors O, Li Q, Liang J, Jiang H, Li Y, Wang J, Lesch KP, Reif A, Buitelaar JK, Franke B (2016). Whole Exome Sequencing Reveals Increased Burden of Rare Functional and Disruptive Variants in Candidate Risk Genes in Individuals With Persistent AttentionDeficit/Hyperactivity Disorder. *J Am Acad Child Adolesc Psychiatry* 55 (6), 521-523
- Vondervoort I\*, Poelmans G\*, Aschrafi A, Pauls D, Buitelaar J, Glennon J, Franke B\* (2016). An integrated molecular landscape implies a crucial role for insulin-related signaling in obsessive-compulsive disorder. *J Psychiatry Neurosci*, 41 (3),140327 [Epub 2016 Feb 8]
- Mostert JC, Hoogman M, Onnink M, van Rooij D, von Rhein D, van Hulzen K, Dammers J, Kan CC, Buitelaar JK, Norris D, Franke B (2016). Similar subgroups based on cognitive performance parse heterogeneity in adults with attentiondeficit/hyperactivity disorder and healthy controls. *J Attention Dis*, Sep 14 [Epub ahead of print]
- Franke B\*, Stein J\*, Ripke S\*, Anttila V, Hibar D, van Hulzen K, Arias Vasquez A, Smoller J, Nichols TE, Neale MC, McIntosh A, Lee P, McMahon F, Meyer-Lindenberg A, Mattheisen M, Andreassen O, Gruber O, Sachdev P, Roiz-Santiañez R, Saykin A, Ehrlich S, Mather K, Turner J, Schwarz E, Thalamuthu A, Yao Y, Ho YYW, Martin NG, Wright MJ, Schizophrenia Working Group of the Psychiatric Genomics Consortium, ENIGMA Consortium, O'Donovan M# , Thompson P# , Neale B # , Medland S#, Sullivan PF# (2016). Is there overlap between common genetic influences on schizophrenia and subcortical brain volumes? *Nature Neuroscience*, 19 (3), 420-431 [Epub 2016 Feb 1]

**Major grants and awards:**

Invited member of Academia Europaea (since 2015)

NWO Vici Personal Grant for excellent researchers, 2013

NWO Aspasia Premium for excellent female researchers, 2012

EU Horizon2020 Program: Marie Skłodowska Curie International Training Network MiND on ADHD and ASD comorbidity (coordinator)

EU Horizon2020 Program: Comorbid Conditions of attention-deficit/hyperactivity - CoCA (work package lead).

EU Framework 7 Program: Aggessotype on aggressive and impulsive behaviour in ADHD and conduct disorder (coordinator)

EU Framework 7 Program: IMAGEMEND on neuroimaging and genetics for improving diagnosis and prognosis in psychiatric disorders (work package lead)

EU Framework 7 Program: TACTICS on compulsivity as cross-disorder trait (work package lead)

**Content of the lecture:** An overview of genetic studies of aggressive behaviour and related disorders, covering studies of common and rare genetic variants.

**Animal models of Aggression**Tuesday, 1<sup>st</sup> November 2016, 10:00h

**Research interest:** Glennon's multidisciplinary research team investigates the role of impulsivity / compulsivity (rule making, rule breaking), aggression, antisocial behaviour and decision making in a number of psychiatric and neurological disorders. By encompassing both clinical and preclinical research, he aims to bridge the translational gap by performing matching studies with similar tasks or readouts (e.g. reversal learning, microRNA, MRI-DTI, 1H-MRS) and cross-species interventions (e.g. pharmacology). By integrating datasets and back-translation of clinical datasets to the preclinic while validating targets for utility in the clinic. The group focus is on a series of interconnected circuits to and from the prefrontal cortex (orbitofrontal, prelimbic, infralimbic and anterior cingulate) to the dorsal / ventral striatum, insula, thalamus, HPA axis and amygdala in mediating impulsivity / compulsivity, aggression, antisocial behaviour and decision making.

**Main publications:**

- Naaijen J, Lythgoe DJ, Amiri H, Buitelaar JK, Glennon JC. Fronto-striatal glutamatergic compounds in compulsive and impulsive syndromes: A review of magnetic resonance spectroscopy studies. *Neurosci Biobehav Rev*. 2015 May;52:74-88.
- Van de Vondervoort II, Gordebeke PM, Khoshab N, Tiesinga PH, Buitelaar JK, Kozicz T, Aschrafi A, Glennon JC. Long non-coding RNAs in neurodevelopmental disorders. *Front Mol Neurosci*. 2013 Dec 30;6:53.
- Buitelaar JK, Smeets KC, Herpers P, Scheepers F, Glennon J, Rommelse NN (2012). Conduct disorders. *Eur Child Adolesc Psychiatry*. 2013 Feb;22 Suppl 1:S49-54.
- Veroude K, von Rhein D, Chauvin RJ, van Dongen EV, Mennes MJ, Franke B, Heslenfeld DJ, Oosterlaan J, Hartman CA, Hoekstra PJ, Glennon JC, Buitelaar JK. The link between callous-unemotional traits and neural mechanisms of reward processing: An fMRI study. *Psychiatry Res*. 2016 Sep 30;255:75-80.
- Bakker MJ, Greven CU, Buitelaar JK, Glennon JC. Psychological treatments for children and adolescents with conduct disorder problems - a systematic review and meta-analysis. *J Child Psychol Psychiatry*. 2016 Aug 8. doi: 10.1111/jcpp.12590.
- van de Vondervoort I, Poelmans G, Aschrafi A, Pauls DL, Buitelaar JK, Glennon JC, Franke B. An integrated molecular landscape implicates the regulation of dendritic spine formation through insulin-related signalling in obsessive-compulsive disorder. *J Psychiatry Neurosci*. 2016 Jun;41(4):280-5.



**Plenary State-of-the-art: Role of Environment in aggression, followed by a debate**

Tuesday, 1<sup>st</sup> November 2016, 13:30h

**Research interest:** Child development, education, prevention, family, parent-child relations, child psychopathology, aggressive behavior, delinquency, substance abuse.

**Main publications:**

- Nagin, D., & Tremblay, R. E. (1999). Trajectories of boys' physical aggression, opposition, and hyperactivity on the path to physically violent and nonviolent juvenile delinquency. *Child Development*, 70(5), 1181-1196.
- Tremblay, R. E. (2000). The development of aggressive behaviour during childhood: What have we learned in the past century?. *International Journal of Behavioral Development*, 24(2), 129-141.
- Tremblay, R. E., Nagin, D. S., Seguin, J. R., Zoccolillo, M., Zelazo, P. D., Boivin, M., ... & Japel, C. (2004). Physical aggression during early childhood: Trajectories and predictors. *Pediatrics*, 114(1), e43-e50.
- Tremblay, R. E. (2013). Early development of physical aggression and early risk factors for chronic physical aggression in humans. In *Neuroscience of Aggression* (pp. 315-327). Springer Berlin Heidelberg.
- Lacourse, E., Boivin, M., Brendgen, M., Petitclerc, A., Girard, A., Vitaro, F., ... & Tremblay, R. E. (2014). A longitudinal twin study of physical aggression during early childhood: evidence for a developmentally dynamic genome. *Psychological medicine*, 44(12), 2617-2627.
- Tremblay, R. E. (2015). Developmental origins of chronic physical aggression: An international perspective on using singletons, twins and epigenetics. *European Journal of Criminology*, 12(5), 551-561

**Plenary State-of-the-art: Role of Environment in aggression, followed by a debate**

Tuesday, 1<sup>st</sup> November 2016, 13:30h

**Research interest:** studying the causes of variation (genetic and environmental) in genome-wide DNA methylation levels in humans and on studying the role of DNA methylation in complex traits such as aggressive behaviour.

**Main publications:**

- Van Dongen, J., Slagboom, P. E., Draisma, H. H., Martin, N. G., & Boomsma, D. I. (2012). The continuing value of twin studies in the omics era. *Nature Reviews Genetics*, 13(9), 640-653
- van Dongen, J., Ehli, E. A., Slieker, R. C., Bartels, M., Weber, Z. M., Davies, G. E., ... & Boomsma, D. I. (2014). Epigenetic variation in monozygotic twins: a genome-wide analysis of DNA methylation in buccal cells. *Genes*, 5(2), 347-365.
- van Dongen, J., Nivard, M. G., Baselmans, B. M., Zilhão, N. R., Ligthart, L., Heijmans, B. T., ... & Boomsma, D. I. (2015). Epigenome-wide association study of aggressive behavior. *Twin research and human genetics*, 18(06), 686-698.
- van Dongen, J., Nivard, M. G., Willemsen, G., Hottenga, J. J., Helmer, Q., Dolan, C. V., ... & Beck, S. (2016). Genetic and environmental influences interact with age and sex in shaping the human methylome. *Nature Communications*, 7, 1-13.



**Name:**

Koen Bolhuis

**Contact:**

k.bolhuis@erasmusmc.nl

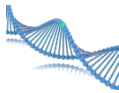
**Center:**

Erasmus MC

**Research interests, skills & specialties:**

Psychiatric nosology and phenomenology, SEM, behavioural genetics, neuroimaging

**Hobbies & further personal information:**



**Name:**

Fiona Alysa Hagenbeek

**Contact:**

f.a.hagenbeek@vu.nl

**Center:**

VU University Amsterdam

**Research interests, skills & specialties:**

Genomics, Metabolomics, statistics. Metabolomics.

**Hobbies & further personal information:**

Reading, rock climbing, hiking



**Name:**

Anne Hendriks

**Contact:**

a.m.hendriks@vu.nl

**Center:**

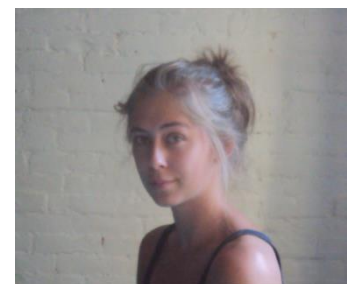
VU University Amsterdam

**Research interests, skills & specialties:**

Child development, treatments for aggression, informant influences. Systematic review, meta-analysis

**Hobbies & further personal information:**

Dancing and many other sports.



**Name:**

Hill Fung Ip

**Contact:**

hillfungip@gmail.com

**Center:**

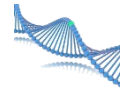
VU University Amsterdam

**Research interests, skills & specialties:**

Gene finding / GWAS  
GWAS

**Hobbies & further personal information:**

Martial arts / reading



**Name:**

Audri Lamers

**Contact:**

a.lamers@curium.nl

**Center:**

Curium-LUMC

**Research interests, skills & specialties:**

Therapeutic alliance/ clinical perspectives,  
Child and Youth Psychiatry

**Hobbies & further personal information:**



**Name:**

Justin Lunningham

**Contact:**

jlunningh@nd.edu

**Center:**

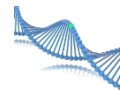
University of Notre Dame

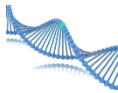
**Research interests, skills & specialties:**

Psychological measurement, data integration,  
structural equation modeling, data mining.  
Data analysis & applied stats, R programming, high throughput computing.

**Hobbies & further personal information:**

Tennis, exercising, cooking on the grill, visiting breweries.





**Name:**

Dr. Jenny van Dongen

**Contact:**

j.van.dongen@vu.nl

**Center:**

VU University Amsterdam

**Research interests, skills & specialties:**

Epigenetics, DNA methylation, EWAS, Illumina450k array, twin studies

**Hobbies & further personal information:**

Horse riding, volunteer at an animal shelter



**Name:**

Peter Roetman

**Contact:**

p.j.roetman@curium.nl

**Center:**

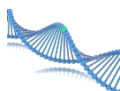
Curium-LUMC

**Research interests, skills & specialties:**

Pediatric aggression, developmental psychopathology, clinical psychology, DNA methylation, Clinical psychology, Pediatric aggression, developmental psychopathology

**Hobbies & further personal information:**

Running, travelling, reading



**Name:**

Alyce Whipp

**Contact:**

alyce.whipp@helsinki.fi

**Center:**

University of Helsinki

**Research interests, skills & specialties:**

Young adult outcomes related to adolescent aggression  
Epidemiologic analyses, academic editing, international experience

**Hobbies & further personal information:**

Reading, social/political issues, parenting, traveling



**Name:**

Mireille Bakker

**Contact:**

mireille.bakker@radboudumc.nl

**Center:**

Radboud University Medical  
Centre

**Research interests, skills & specialties:**

Human modelling, CD/ODD, ASD, CU traits,  
neurocognitive development, treatment and prevention,  
genes, eye-tracking, neurobiological markers.  
Meta-analyses, project management, teaching,  
recruitment, supervising students

**Hobbies & further personal information:**

Aspiring barista, yoga, climbing

**Name:**

Dr. Héctor Carreño

**Contact:**

hcg18@leicester.ac.uk

**Center:**

University of Leicester

**Research interests, skills & specialties:**

Neurobiology underpinning psychiatric  
disorders, genes controlling behaviour.

Use of zebrafish as a translational model in neuroscience:  
behavior, histology, molecular biology.

**Hobbies & further personal information:**

Workout, outdoors, travelling, drinking ale

**Name:**

Dr. Noelia Fernandez Castillo

**Contact:**

noe.genetica@gmail.com

**Center:**

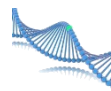
University of Barcelona

**Research interests, skills & specialties:**

Genetics of psychiatric disorders:  
aggressive behavior, drug addiction, autism. I work on  
association studies, transcriptomics, methylomics and  
epigenetics

**Hobbies & further personal information:**

Play ukulele, painting and horror movies





**Name:**

Dr. Gabriela Gan

**Contact:**

gan\_gabriela@hotmail.com

**Center:**

Central Institute of Mental Health

**Research interests, skills & specialties:**

My research centers on understanding the neural and behavioral mechanisms that underlie loss of control over behavior seen in excessive alcohol consumption and outbursts of aggression. To this end, I combine fMRI with psychological paradigms and alcohol administration methods. Brain-behavior interactions, fMRI, experimental psychology, intravenous alcohol administration.

**Hobbies & further personal information:**

Music, sports, food

**Name:**

Anais Harneit

**Contact:**

anais.harneit@zi-mannheim.de

**Center:**

Central Institute of Mental Health

**Research interests, skills & specialties:**

Neuroimaging genetics, structural and functional brain connectivity, brain networks; DTI analyses using FSL, TBSS, tractography using Trackvis, DSIstudio

**Hobbies & further personal information:****Name:**

Dr. Nathalie Holz

**Contact:**

nathalie.holz@zi-mannheim.de

**Center:**

Central Institute of Mental Health

**Research interests, skills & specialties:**

How the environment shapes brain structure and function; neural signatures differentiating between different conduct disorder subtypes. fMRI, VBM, functional connectivity, EEG.

**Hobbies & further personal information:**

Reading, sports, travelling



**Name:**

Hannah Niermann

**Contact:**

h.niermann@psych.ru.nl

**Center:**

Radboud University Medical Centre

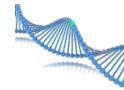
**Research interests, skills & specialties:**

Primary defensive stress reactions;  
internalizing and externalizing  
symptoms,

Mixed Effects Model; R

**Hobbies & further personal information:**

Ballroom dancing; yoga

**Name:**

Gido Schoenmacker

**Contact:**

gido.schoenmacker@radboudumc.nl

**Center:**

Radboud University Medical Centre

**Research interests, skills & specialties:**

Machine learning on biomedical data. Machine learning,  
statistics, computer programming.

**Hobbies & further personal information:**

Computer stuff, judo, chess, woodworking, long walks on  
the beach... never mind.

**Name:**

Dr. Yan Shi

**Contact:**

yan.shi@radboudumc.nl

**Center:**

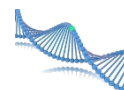
Radboud University Medical  
Centre

**Research interests, skills & specialties:**

Neurobiology, Stem cells.  
Neuron differentiation, CRISPR-cas9

**Hobbies & further personal information:**

Reading books, listening music





**Name:**

Anna Tyborowska

**Contact:**

a.tyborowska@donders.ru.nl

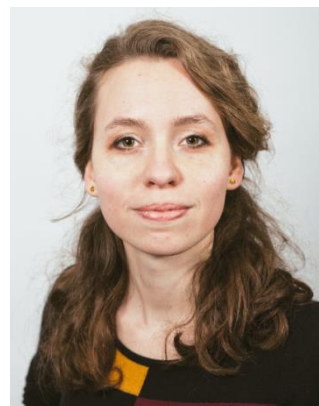
**Center:**

Radboud University Medical Centre

**Research interests, skills & specialties:**

Developmental neuroscience, adolescence, emotional control, hormones, stress, psychopathology. Imaging – functional and structural MRI analysis, puberty, approach-avoidance tendencies, longitudinal analyses

**Hobbies & further personal information:**



**Name:**

Marjolein van Donkelaar

**Contact:**

marjolein.vandonkelaar@radboudumc.nl

**Center:**

Radboud University Medical Centre

**Research interests, skills & specialties:**

Genetics, Imaging Genetics

**Hobbies & further personal information:**

Kayaking, Reading, Travelling



**Name:**

Julia Werhahn

**Contact:**

julielisabeth.werhahn@kjpd.uzh.ch

**Center:**

University of Zürich

**Research interests, skills & specialties:**

Restingstate, Biofeedback-Training Psychotherapy, Neuroimaging

**Hobbies & further personal information:**

Yoga, Tae Bo, Travelling, Music (e.g. Electro)





**Name:**

Pascal Aggensteiner

**Contact:**

pascal.aggensteiner@zi-mannheim.de

**Center:**

Central Institute of Mental Health

**Research interests, skills & specialties:**

Neuro/Biofeedback, CD/ODD, ADHD, Psychophysiology.  
EEG, MRT

**Hobbies & further personal information:**

Politics/ Brain computer interfaces



**Name:**

Sarah Baumann

**Contact:**

sbaumann@ukaachen.de

**Center:**

University hospital Aachen

**Research interests, skills & specialties:**

Conduct disorder, ADHD, reward learning, fMRI. Clinical interviews (K-SADS-PL), fMRI

**Hobbies & further personal information:**

Sports (swimming, running); books

**Name:**

Malou Gundlach

**Contact:**

magundlach@ukaachen.de

**Center:**

University hospital Aachen

**Research interests, skills & specialties:**

Neuropsychological aspects of conduct disorder such as emotion regulation, Therapy for conduct disorder, Youth Welfare Institutions.

**Hobbies & further personal information:**

Salsa dancing, international get-togethers, outdoor activities

**Name:**

Willeke Menks

**Contact:**

willeke.menks@upkbs.ch

**Center:**

University of Basel

**Research interests, skills & specialties:**

Brain characteristics and development within psychiatric disorders, and its biological markers/factors (e.g. endocrinology/genetics). Pediatric neuroimaging acquisition. Structural and functional neuroimage data analysis (fMRI, VBM, DTI, Ginger-ALE). Programming/scripting (Matlab, SPM, SPSS, Presentation®, Linux). Eye Tracking (Arrington). Conduct disorder and CU traits.

**Hobbies & further personal information:**

Basketball, dancing, backpacking, greek mythology and making funny cakes.

**Name:**

Helena Oldenhof

**Contact:**

h.oldenhof@debascul.com

**Center:**

VU University Amsterdam

**Research interests, skills & specialties:**

adolescents/forensic  
psychology; forensic psychology/research/diagnostics

**Hobbies & further personal information:**

Dancing! Cooking! Going out for dinner

**Name:**

Ruth Pauli

**Contact:**

Rxp750@bham.ac.uk

**Center:**

University of Birmingham

**Research interests, skills & specialties:**

Conduct disorder, machine  
learning

**Hobbies & further personal information:**

Astronomy, walking, reading

**Name:**

Dr. Jack Rogers

**Contact:**

j.rogers@bham.ac.uk

**Center:**

University of Birmingham

**Research interests, skills & specialties:**

Neuroimaging, Conduct Disorder, Antisocial Behaviour,  
Childhood Development, Speech and Language  
Processing  
Neuroimaging analysis (fMRI, DTI and sMRI/VBM), SPM,  
FSL, Matlab, Psychophysics, Speech processing.

**Hobbies & further personal information:**

Triathlon, Cycling, Illustrating



**Name:**

Dr. Reka Siklosi

**Contact:**

reka.siklosi@gmail.com

**Center:**

University of Szeged

**Research interests, skills & specialties:**

Clinical manifestations of CD, symptomatology of CD.  
Clinical doctor.

**Hobbies & further personal information:**

Sports

**Name:**

Marion Timmermann

**Contact:**

m.timmermann@stud.uni-heidelberg.de

**Center:**

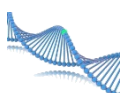
University Hospital Heidelberg

**Research interests, skills & specialties:**

Oxytocin and Aggression  
fMRI data, eye tracking

**Hobbies & further personal information:**

Hiking, sports

**Name:**

Dr. Regina Waltes

**Contact:**

regina.waltes@kgu.de

**Center:**

University hospital Frankfurt

**Research interests, skills & specialties:**

ASD, ADHD, Genetics, Epigenetics,  
Biomarkers.  
Molecular Biology, Genetics, DNA  
Genotyping, Sequencing,  
Cell culture (LCLs)

**Hobbies & further personal information:**

Sports (MTB, Handball, Skiing), Cooking



**Name:**

Vinícius Oliveira

**Contact:**

vinicius.oliveira@biologie.uni-regensburg.de

**Center:**

University of Regensburg

**Research interests, skills & specialties:**

I am especially interested in understand how the neuropeptides OXT and AVP are involved in aggressive behavior of female rats. I am also interested about the effects of social isolation on female aggression.

Behavioral tests; stereotaxic surgery; drug infusion; immunohistochemistry

**Hobbies & further personal information:**

Jogging; Gym (sometimes), To read, I love go out to dance ;-)



**Name:**

Boris Böttinger

**Contact:**

boris.boettinger@zi-mannheim.de

**Center:**

Central Institute of Mental Health

**Research interests, skills & specialties:**

rt-fMRI-Neurofeedback

MRT and Recruiting

**Hobbies & further personal information:**

Finances and music

**Name:**

Dr. Sarah Baumeister

**Contact:**

sarah.baumeister@zi-mannheim.de

**Center:**

Central Institute of Mental Health

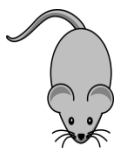
**Research interests, skills & specialties:**

Nonpharmacological therapy effects,  
Neuro-and biofeedback, ADHD, ASD,  
Aggression.

EEG, fMRI, combined EEG-fMRI, DTI.

**Hobbies & further personal information:**

Yoga, craft projects, dancing, learning new things.

**Name:**

Amanda Jager

**Contact:**

Amanda.jager@radboudumcl.nl

**Center:**

Radboud University Medical Centre

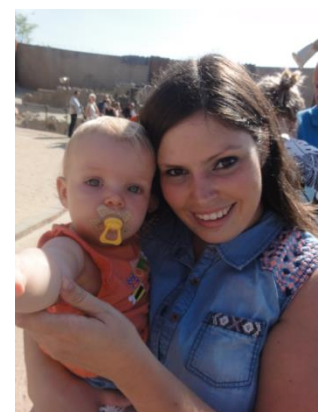
**Research interests, skills & specialties:**

Preclinical research, microRNAs,  
RNA

sequencing. Preclinical aggression research, touchscreen  
operant behavior, genomics and proteomics,  
construction of viruses and constructs

**Hobbies & further personal information:**

Horse riding, reading books and hiking



**Name:**

Dr. Hyun Ruisch

**Contact:**

i.h.ruisch@umcg.nl

**Center:**

University of Groningen

**Research interests, skills & specialties:**

Neuroscience, neuroimaging,  
genetics, psychiatry.  
MD resident, meta-analysis, GxE, diffusion tensor  
imaging, matlab

**Hobbies & further personal information:**

Playing piano



**Name:**

Joana Viana

**Contact:**

j.viana@exeter.ac.uk

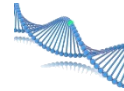
**Center:**

University of Exeter

**Research interests, skills & specialties:**

Psychiatric epigenetic  
Molecular biology lab and  
bioinformatics

**Hobbies & further personal information**



**Name:**

Peter Zijderveld

**Contact:**

pmzijderveld@gmail.com

**Center:**

Radboud University Medical Centre

**Research interests, skills & specialties:**

Aggression, attention and perception.  
Animal work, python, two photon microscopy.

**Hobbies & further personal information:**

Basketball





**Name:**

Dr. Francesca Zoratto

**Contact:**

f.zoratto@gmail.com

**Center:**

Istituto Superiore di Sanità  
Roma

**Research interests, skills & specialties:**

Animal behaviour; Ethology; Development and validation of animal models of human neurodevelopmental and neuropsychiatric disorders.  
Behavioural phenotyping of animal models; Operant tasks for decision-making with delayed and/or uncertain rewards (for preclinical modelling of impulse-control disorders and disordered gambling).

**Hobbies & further personal information:**

Hiking; Gardening





## NOTES

\*\*\*





UNTIL NEXT TIME ☺